



Wild Schools Program Pathways

The Wild Schools program provides professional development and support for outdoor and place-based teaching and learning that fosters being **WILD (wondering, inquiring, learning, doing)**. The program is flexible and offers a variety of options and resources to support school-wide environmental education goals.

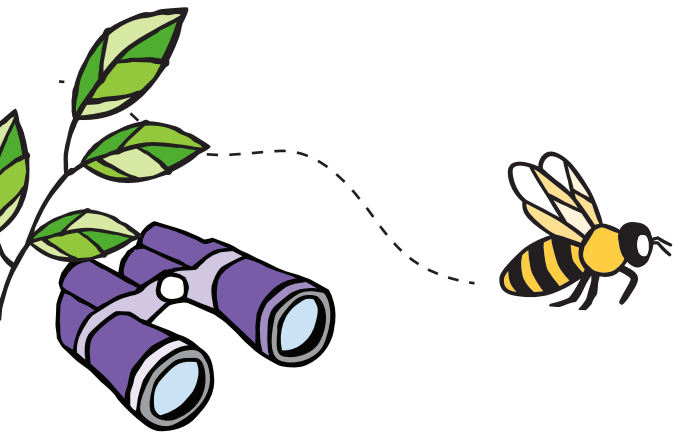
Suggested Pathways

To help you define which pathway suits your school best, consider how comfortable most staff are with environmental teaching strategies and outdoor learning experiences.

The Wild Schools program focuses on student-centered, place-based experiences to connect learners with nature and foster stewardship of BC's biodiversity.

Need help?

Contact your facilitator to discuss and identify which pathway fits your school best and define the next steps.



Introductory Program Session

Get Wild Out There (Mandatory)

Whether you're new to environmental and outdoor teaching learning or a seasoned explorer, this workshop will get you started with the Wild Schools program.

You'll explore outdoor learning, what it means, and how your experience with it supports student learning. We'll look at where you're at by sharing what you already do and have done. You'll exchange ideas about what you'd like to develop further and take note of some obstacles. This session will provide an opportunity to experience some practical and easy ideas for getting wild outdoors with your learners.

This will kick off your planning as a school, with support from your facilitator(s) and the team at HCTF Education. Together, we'll map out what you need to support your school's vision for engaging students with the Wild Schools program.



Majority of staff are new to outdoor learning	Some staff are experienced with outdoor learning	Majority of staff are experienced with outdoor learning
YEAR 1 <ul style="list-style-type: none"> Outdoor Learning Engages Everyone Close Counts: School Grounds as a Place for Learning Exploring Inquiries in Nature 	YEAR 1 <ul style="list-style-type: none"> Outdoor Learning Engages Everyone Exploring Inquiries in Nature Nature Nearby: Taking Learning Beyond School Grounds 	YEAR 1 <ul style="list-style-type: none"> Exploring Inquiries in Nature Connections to Competencies & Assessment Outdoors
YEAR 2 <ul style="list-style-type: none"> Nature Nearby: Taking Learning Beyond School Grounds Connections to Competencies & Assessment Outdoors 	YEAR 2 <ul style="list-style-type: none"> Connections to Competencies & Assessment Outdoors Biodiversity in School Grounds 	YEAR 2 <ul style="list-style-type: none"> Biodiversity in School Grounds A topic or theme-based workshop
YEAR 3 <ul style="list-style-type: none"> Biodiversity in the School Grounds LEAP for Biodiversity: Engaging in Project-based Learning 	YEAR 3 <ul style="list-style-type: none"> LEAP for Biodiversity: Engaging in Project-based Learning A topic or theme-based workshop 	YEAR 3 <ul style="list-style-type: none"> LEAP for Biodiversity: Engaging in Project-based Learning A topic or theme-based workshop
For each year, select additional workshops to suit your needs		

One Example of a Pathway for a 'Ready To Go' School

The teachers at this school are eager to GO, aka Get Outdoors!

Most teachers were new to outdoor learning but there were a few who were experienced in specialty areas. Even though there were a couple of teachers with some experience, they weren't sure where to start as a school and how to best support everyone on staff, new and experienced. They knew of numerous benefits of outdoor learning for students. Everyone had some ideas but wondered what more they could be doing with a little help. Everyone was interested in wetlands because of one located nearby, but they were open to learn what else they might have been overlooking!



They were looking for:

- Experience the array of possibilities of outdoor learning to enhance what ideas they already have about what's possible, new or experienced
- New ways to see the playground and the school grounds
- How to empower students to explore and experience their surroundings with wonder
- More confidence and skills and add new tools to their outdoor learning toolbox
- More ideas on how to make the most use of the wetlands nearby without overlooking other features for outdoor learning
- Connections to curriculum and assessment strategies that would capture what they witnessed students were learning
- Learn about the connections and interrelationships among wetlands and biodiversity
- Possibilities for projects to choose from, and dive into a project in a manageable way
- Strategies for integrating student empowerment into caring for biodiversity in the shadows of climate change

In collaboration with their facilitator and HCTF Education, staff reflected on where they were at and where they were looking to develop their capacity (as individuals, and as a school) along with topics/themes important to them.

Here's the approach that was developed:

YEAR 1

- Outdoor Learning Engages Everyone
- Close Counts: School Grounds as a Place for Learning
- Exploring Inquiries in Nature

YEAR 2

- Nature Nearby: Taking Learning Beyond School Grounds
- Connections to Competencies & Assessment Outdoors
- Seeing Math and Literacy in Nature

YEAR 3

- Biodiversity in the School Grounds
- LEAP for Biodiversity: Engaging in Project-based Learning
- Climate Change: Impacts and Adaptations

