

Activity Worksheet

Wildlife Tree Species Cards

The following illustrations are all wildlife tree users found in British Columbia. They represent the main wildlife tree user groups and include Primary Cavity Excavators, Secondary Cavity Users, Open Nesters, Mammals, Amphibians, Plants and Insects. You can photocopy them and cut them out for a variety of the activities in this book or create your own activities or card games. You may want to do some research to find out which species are found in your area.

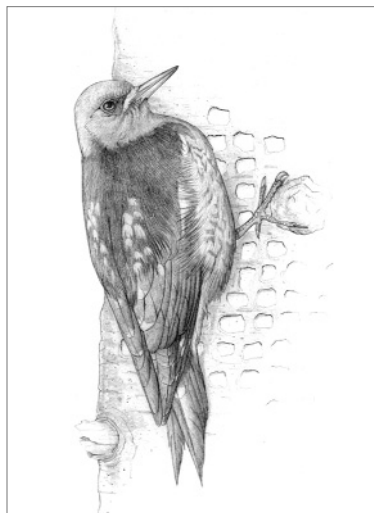


Pileated Woodpecker *Dryocopus pileatus*

Wildlife Tree Use:

- Primary Cavity Excavator
- Roost
- Forages for insects

Notes: B.C.'s largest woodpecker and the inspiration for Walter Lantz's Woody Woodpecker. Feeding cavities are large, vertical and rectangular.

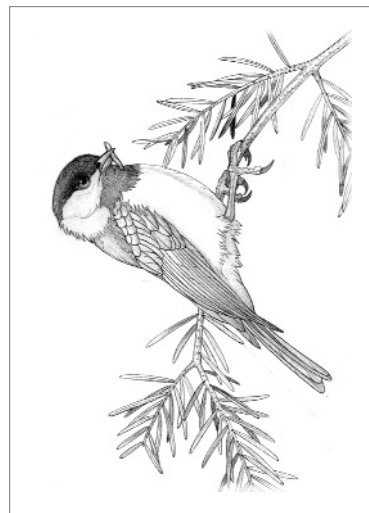


Red-breasted Sapsucker *Sphyrapicus ruber*

Wildlife Tree Use:

- Primary Cavity Excavator
- Roost
- Forages for insects, especially ants.

Notes: Drills rows of holes or sapwells in a variety of tree species and feeds on both the sap and insects attracted to the sap.



Black-capped Chickadee *Parus atricapillus*

Wildlife Tree Use:

- Weak Primary Cavity Excavator
- Occasional Secondary Cavity User
- Foraging
- Winter Roost

Notes: Many of us recognize its call of "chicka-dee-dee-dee", while some of us say spring begins when they hear its call of "Heeere-sweetie".

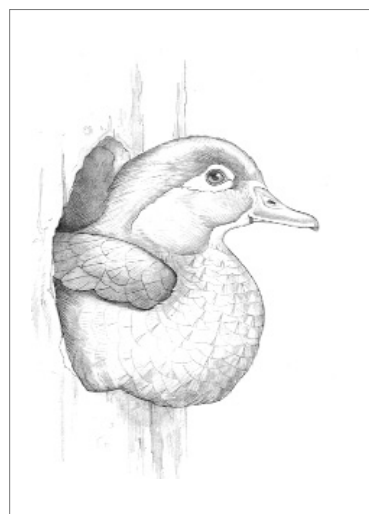


Northern Flicker *Colaptes auratus*

Wildlife Tree Use:

- Primary Cavity Excavator
- Roost
- Forages for insects

Notes: Food may include fruit, nuts and grains. Will use old cavities for nesting and roosting.



Wood Duck *Aix sponsa*

Wildlife Tree Use:

- Secondary Cavity User

Notes: B.C.'s only species of duck that regularly perches on branches, the Wood Duck may nest as high as 25 metres.



Northern Saw-whet Owl
Aegolius acadicus

Wildlife Tree Use:
 • Secondary Cavity User
 • Winter Roost
Notes: At an average of 20 cm, this owl is not quite as big as a robin. The Queen Charlotte Island's sub-species, *A. a. brooksi*, is on the Blue List.



Belted Kingfisher
Ceryle alcyon

Wildlife Tree Use:
 • Hunting Perch
Notes: Kingfishers are Primary Cavity Excavators but not in wood. They prefer to excavate long nesting holes in the sand and soil of streambanks and other similar soil structures.



Mountain Bluebird
Sialia currucoides

Wildlife Tree Use:
 • Secondary Cavity User
 • Hawking Perch
Notes: There's a close relationship between these beautiful birds, aspens and both the Hairy Woodpecker and Northern Flicker. Where their breeding ranges overlap in the interior, both species prefer decaying Aspens for their nest site and, as a result, so do the bluebirds.



Great Blue Heron
Ardea herodias

Wildlife Tree Use:
 • Open Nester on large tree limbs
 • Roost
 • Hunting Perch
Notes: Development threats to its habitat of large stands of mature forest near its aquatic foraging grounds have put B.C.'s largest heron on the Blue List. Its place on the top of the food chain has made it an indicator of wetland health.



Turkey Vulture
Cathartes aura

Wildlife Tree Use:
 • Roost
 • may nest among roots
Notes: Hundreds of Turkey Vultures congregate and roost in the trees on the southern tip of Vancouver Island, waiting until the conditions are right for migration south. Their heads have no feathers so they can easily get into carrion.



Osprey
Pandion haliaetus

Wildlife Tree Use:
 • Open Nester on large tree limbs and broken tops
 • Lookout and Feeding Perch
Notes: Ospreys always hold their fish dinners head first as they fly back to the nest or their feeding perch. Spines on the pads of the soles of its toes help it hold onto its slippery catch.



Bald Eagle
Haliaeetus leucocephalus

Wildlife Tree Use:

- Open Nester on large tree limbs
- Hunting Perch
- Roost
- Preening

Notes: Up to 15,000 Bald Eagles winter in B.C. – approximately 40% of the world's population. It can take four to five years for young birds to acquire the mature plumage of white head and tail.

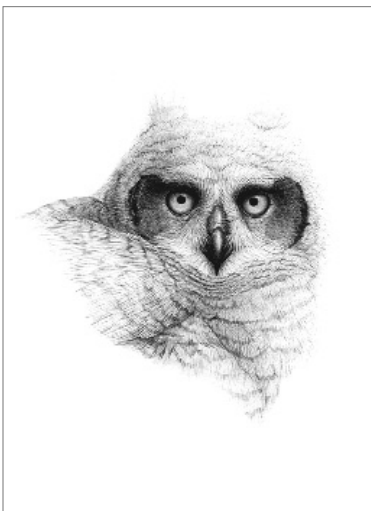


Red Squirrel
Tamiasciurus hudsonicus

Wildlife Tree Use:

- Nest
- Summer and Winter Dens in cavities
- Cavities used for Feeding Stations

Notes: Squirrels feeding on conifer seeds and mushrooms help spread seeds and spores throughout the forest but they also feed on young tree seedlings and predate on birds' eggs and nestlings.

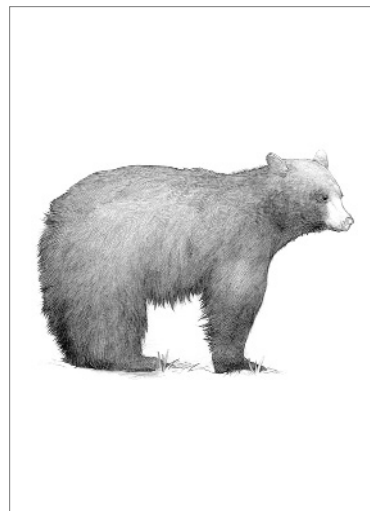


Great Horned Owl
Bubo virginianus

Wildlife Tree Use:

- Open Nester on broken tops and other species nests
- Secondary Cavity User
- Hunting Perch

Notes: The Great Horned has the widest distribution of the owls in North America and is one of the first to nest in very early spring. It has loud call, "Whooo, who-who-who, whooo - whooo."

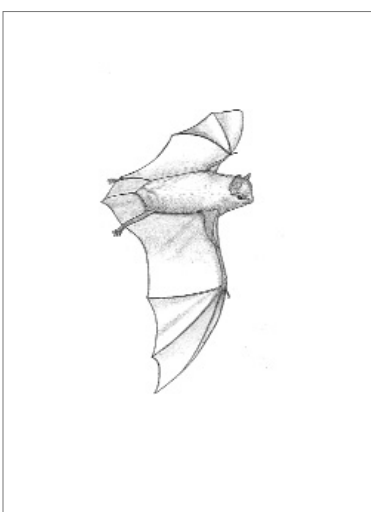


Black Bear
Ursus americanus

Wildlife Tree Use:

- Hibernates in hollow trees, at bases of trees (especially cedars) and under fallen wildlife trees

Notes: Black Bears are omnivores, which means they eat practically anything from Skunk Cabbage and ants to fish and carrion.

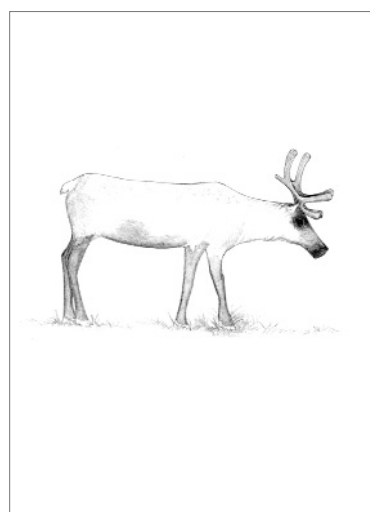


Little Brown Myotis
Myotis lucifugus

Wildlife Tree Use:

- Cavities as nurseries
- Day Roost in cavities and behind bark

Notes: This tiny (6.2 g to 10.2 g in weight and 70 to 108 mm in length) and abundant bat is found throughout the province. It can eat up to 600 insects an hour!

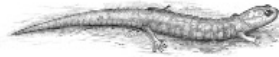


Caribou
Rangifer tarandus

Wildlife Tree Use:

- Winter diet made up almost entirely of lichens found in mature stands of trees that include both standing and downed wildlife trees.

Notes: The southern populations of caribou are on the provincial Blue-List because of habitat loss and fragmentation.

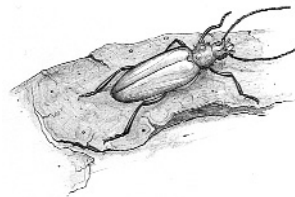


Clouded Salamander
Aneides ferreus

Wildlife Tree Use:

- Lays eggs in rotting wood
- Feeding site
- Shelter

Notes: All salamanders are very fragile and sensitive to human touch due to the salts on our fingers. Some like the Clouded Salamander are completely terrestrial – they don't need standing or running water.



Spiny Longhorn Beetle
Ergates spiculatus

Wildlife Tree Use:

- Larvae feeds on wildlife trees

Notes: The Spiny Longhorn is B.C.'s largest beetle at up to 6 cm long. Its large white larvae bore into the wood of conifer, mainly Douglas-fir and pines, especially injured or dead trees, logs and stumps. The larvae is an important food source for woodpeckers.



Western Red-backed Salamander
Plethodon vehiculum

Wildlife Tree Use:

- Lays eggs in rotting wood
- Feeding site
- Shelter

Notes: The Western Red-backed Salamander Respiration occurs through its skin and the lining of its mouth. They like the dampness found in rotten logs because their skin must remain moist to work.

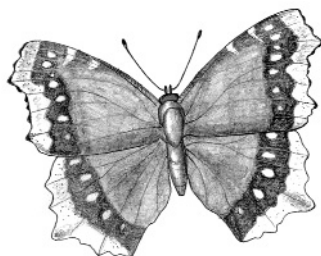


Red Huckleberry
Vaccinium parvifolium

Wildlife Tree Use:

- Grows in soil rich in decaying wood, especially on logs and stumps.

Notes: The juicy red berries were an important food source for first peoples and were even used as fish bait because they look like salmon roe, a favourite food of trout.



Mourning Cloak Butterfly
Nymphalis antiopa

Wildlife Tree Use:

- Larval Food is many trees including elm, poplar and willow
- Gray and thorny pupae may be found together under leaves and loose bark
- Many adults winter under loose bark

Notes: The undersides of their wings looks like bark or weathered wood.



Licorice Fern
Polypodium glycyrrhiza

Wildlife Tree Use:

- Often grows on tree trunks and branches (especially bigleaf maple)

Notes: This fern is an epiphyte - a plant growing on another plant, and is found along the coast. Both species get through periods of drought by curling and drying up like mosses and lichens.